

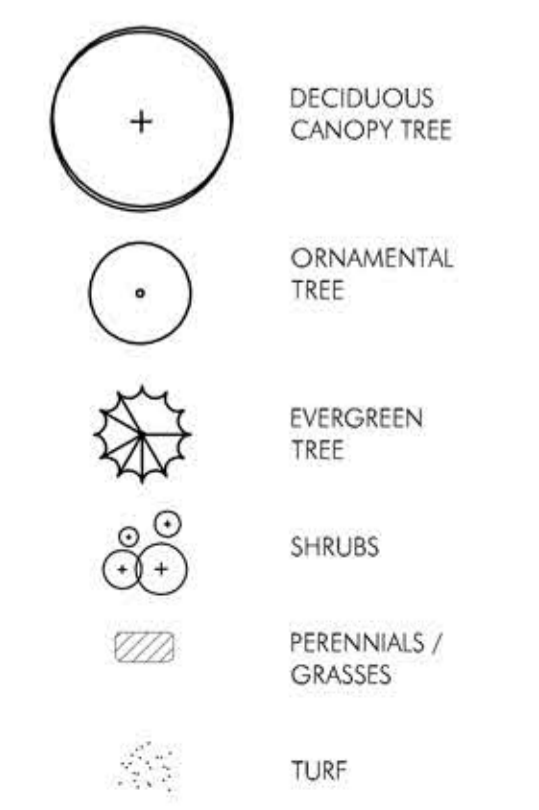
REPRESENTATIVE PLANT LIST

Key	Botanical name	Common Name	Size	Root	Spacing	Quantity
DECIDUOUS CANOPY TREES						
FR AP	<i>Fraxinus americana</i> 'Autumn Purple'	Autumn Purple Ash	2' Caliper	BB	See plan	5
FR PA	<i>Fraxinus pennsylvanica</i> 'Patmore'	Patmore Ash	2' Caliper	BB	See plan	2
GL TR	<i>Gleditsia triacanthos</i> inermis 'Shademaster'	Shademaster Honeylocust	2' Caliper	BB	See plan	2
PO SA	<i>Populus sargentii</i>	Plains Cottonwood	2' Caliper	BB	See plan	9
QU MA	<i>Quercus macrocarpa</i>	Burr Oak	2' Caliper	BB	See plan	8
QU RU	<i>Quercus rubra</i>	English Oak	2' Caliper	BB	See plan	6
TI CO	<i>Tilia cordata</i> 'Greenspire'	Greenspire Linden	2' Caliper	BB	See plan	9
ORNAMENTAL TREES						
PY CH	<i>Pyrus calleryana</i> 'Chanticleer'	Chanticleer Pear	2' Caliper	BB	See plan	8
AC TA	<i>Acer tataricum</i>	Tatarian Maple	2' Caliper	BB	See plan	3
MA SS	<i>Malus x 'Spring Snow'</i>	Spring Snow Crabapple	2' Caliper	BB	See plan	4
EVERGREEN TREES						
PI NI	<i>Pinus nigra</i>	Austrian Pine	6' Height	BB	See plan	9
JU SC	<i>Juniperus scopulorum</i> 'Cologreen'	Colorado Juniper	6' Height	BB	See plan	2
PI PU	<i>Picea pungens</i>	Colorado Spruce	6' Height	BB	See plan	6
DECIDUOUS SHRUBS						
AC GI	<i>Acer ginnala</i> 'Compacta'	Dwarf Amur Maple	5 Gallon	Cont.	6' O.C.	18
AM AL	<i>Amelanchier alnifolia</i>	Saskatoon Serviceberry	5 Gallon	Cont.	8' O.C.	11
AM RE	<i>Amelanchier alnifolia</i> 'Regent'	Regent Serviceberry	5 Gallon	Cont.	6' O.C.	16
EU AL	<i>Euonymus alatus</i> 'Compactum'	Compact Burning Bush	5 Gallon	Cont.	8' O.C.	14
SY ME	<i>Syringa meyeri</i>	Meyer Lilac	5 Gallon	Cont.	4' O.C.	10
CA CL	<i>Conyopertis x clandonensis</i> 'Blue Mist'	Blue mist Spirea	5 Gallon	Cont.	4' O.C.	57
VI TR	<i>Viburnum trilobum</i>	Compact Am. Cranberrybush	5 Gallon	Cont.	4' O.C.	29
SP AW	<i>Spiraea jap.</i> 'Anthony Waterer'	Anthony Waterer Spirea	5 Gallon	Cont.	3' O.C.	50
RI AL	<i>Ribes alpinum</i>	Alpine Currant	5 Gallon	Cont.	4' O.C.	204
SP FR	<i>Spiraea japonica</i> 'Fraebelli'	Fraebell Spirea	5 Gallon	Cont.	3' O.C.	12
VI OP	<i>Viburnum opulus</i> 'nanaum'	Dwarf European Cranberrybush	5 Gallon	Cont.	3' O.C.	42
SP LM	<i>Spiraea japonica</i> 'Limemound'	Limemound Spirea	5 Gallon	Cont.	3' O.C.	15
PO FR	<i>Potentilla fruticosa</i> 'Kathryn Dykes'	Kathryn Dykes Potentilla	5 Gallon	Cont.	3' O.C.	12
EU NA	<i>Euonymus nana</i> 'Turkestonicus'	Turkestan Burning Bush	5 Gallon	Cont.	3' O.C.	43
PH LE	<i>Philadelphus lewisii</i> 'Cheyenne'	Cheyenne Mockorange	5 Gallon	Cont.	6' O.C.	22
RH TR	<i>Rhus trilobata</i>	Three-Leaf Sumac	5 Gallon	Cont.	4' O.C.	23
CO AL	<i>Cornus alba</i> 'Argentea-Marginata'	Vargated Dogwood	5 Gallon	Cont.	6' O.C.	8
RO FO	<i>Rosa foetida</i> 'Bicolor'	Austrian Copper Rose	5 Gallon	Cont.	8' O.C.	11
SY VU	<i>Syringa vulgaris</i> 'Primrose'	Creamy Yellow French Lilac	5 Gallon	Cont.	8' O.C.	3
CO DA	<i>Cotoneaster dammeri</i> 'Coral Beauty'	Coral Beauty Cotoneaster	5 Gallon	Cont.	6' O.C.	24
EVERGREEN SHRUBS						
JU BU	<i>Juniperus sabina</i> 'Buffalo'	Buffalo Juniper	5 Gallon	Cont.	5' O.C.	51
JU BR	<i>Juniperus sabina</i> 'Broadmoor'	Broadmoor Juniper	5 Gallon	Cont.	5' O.C.	31
JU HU	<i>Juniperus horizontalis</i> 'Hughes'	Hughes Juniper	5 Gallon	Cont.	5' O.C.	25
PERENNIALS & VINES & GRASSES						
AG CO	<i>Agastache aurantiaca</i> 'Coronado'	Coronado Hyssop	1 Gal.	Cont.	18" O.C.	59
HO PA	<i>Hosta fortunei</i> 'Patriot'	Patriot Hosta	1 Gal.	Cont.	24" O.C.	34
HE SA	<i>Heuchera sanguinea</i> 'White Cloud'	White Coral Bells	1 Gal.	Cont.	18" O.C.	33
MI VA	<i>Miscanthus sinensis</i> 'Variegatus'	Variegated Maiden Grass	1 Gal.	Cont.	36" O.C.	5
IM CY	<i>Imperato cylindrica</i> 'Red Baron'	Japanese Blood Grass	1 Gal.	Cont.	18" O.C.	16
DI LU	<i>Dicentra formosa</i> 'Luxuriant'	Fringed Bleeding Heart	1 Gal.	Cont.	18" O.C.	25
CA KF	<i>Calamagrostis acutiflora</i> 'Karl Forester'	Feather Reed Grass	1 Gal.	Cont.	24" O.C.	46
HO ME	<i>Hosta x undulata</i> 'Mediovariegata'	Variegated Plantain Lily	1 Gal.	Cont.	24" O.C.	23
CA OD	<i>Calamagrostis acutiflora</i> 'Overdam'	Overdam Feather Reed Grass	1 Gal.	Cont.	24" O.C.	26
PE ST	<i>Penstemon strictus</i>	Rocky Mountain Penstemon	1 Gal.	Cont.	18" O.C.	24

PLANT NOTES

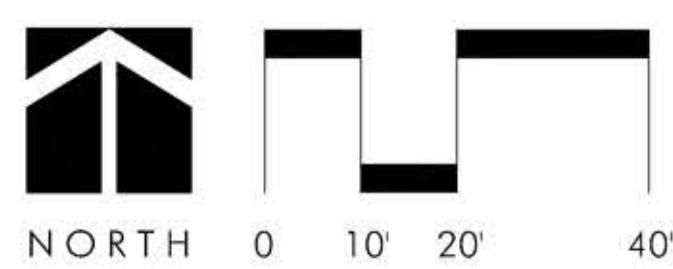
- Landscape materials shall be in accordance with AAN specifications for Number One Grade.
- Turf areas shall be irrigated with an automatic pop-up irrigation system. Shrub beds and trees to be irrigated with an automatic drip (trickle) irrigation system. The irrigation plan shall be reviewed and approved by the City of Ft. Collins prior to the issuance of a building permit.
- Trees to be balled and burlapped, unless otherwise noted.
- Shrub beds shall be mulched with a 3" layer of 1/2" to 1" rock mulch over non woven polypropylene weed barrier such as Typar or Miraflo.
- Irrigated turf shall be seeded or sodded with the Harmony Corridor mixture.
- A Free permit must be obtained from the City Forester before any trees or shrubs as noted on this plan are planted, pruned, or removed in the public Right of Way.
- Landscaping must be installed or secured with an irrevocable letter of credit, Performance Bond, or escrow account for 125 % of the valuation of the materials and labor prior to issuance of a Certificate of Occupancy.
- Landscaping shall be installed and maintained by the property owner, including trees and groundcover within the R.O.W.
- Parking shall be screened from public streets by plants, fencing, and/or berming.
- Soil in landscape areas shall be amended with 3 cy/1,000 sf well composted manure.
- The following separations shall be provided between trees/shrubs and utilities:
 - 40 feet between canopy trees and street lights
 - 15 feet between ornamental trees and streetlights
 - 10 feet between trees and public water and sanitary and storm sewer lines
 - 4 feet between shrubs and public water and sanitary and storm sewer lines
 - 4 feet between trees and gas lines
- Field locate utilities prior to planting.
- To the maximum extent feasible, topsoil that is removed during construction activity shall be conserved for later use on areas requiring revegetation and landscaping.
- Where necessary, existing trees shall be pruned to City Forester medium prune standards.
- The developer shall contact the City Forester to inspect all street tree plantings at completion. All trees need to have been installed as shown on the landscape plan. Approval of street tree planting is required before final approval. Failure to obtain approval by the City Forester for street tree planting shall result in a hold on certificate of occupancy.
- Perennial beds to be mulched with 2" depth shredded cedar mulch. No weed barrier shall be placed in perennial beds.
- The top 6 inches of topsoil will be stripped and stored on site. The soil will then be placed in the planting areas.
- The soil in all landscape areas, including parkways and medians, shall be thoroughly loosened to a depth of not less than eight (8) inches and soil amendment shall be thoroughly incorporated into the soil of all landscape areas to a depth of at least six (6) inches by tilling, discing or other suitable method, at a rate of at least three (3) cubic yards of soil amendment per one thousand (1,000) square feet of landscape area.
- A free permit must be obtained from the City Forester before any trees or shrubs as noted on this plan are planted, pruned or removed on the public right-of-way. This includes zones between the sidewalk and curb, median and other city property. This permit shall approve the location and species to be planted. Failure to obtain this permit may result in replacing or relocating trees and a hold on certificate of occupancy.
- The developer shall contact the City forester to inspect all street tree plantings at the completion of each phase of the development. All trees need to have been installed as shown on the landscape plan. Approval of street tree planting is required before final approval of each phase. Failure to obtain approval by the City Forester for the street trees in a phase shall result in a hold on certificate of occupancy for future phases of the development.

LANDSCAPE LEGEND



LANDSCAPE CATEGORIES

LANDSCAPE CATEGORIES	WATER USE		
	LOW	MEDIUM	HIGH
TURF	xx SF	xx SF	xx SF
SHRUB AREAS	xx SF	xx SF	xx SF



LANDSCAPE PLAN
HILTON GARDEN INN
LOT 2 OF PRESTON CENTER FIRST FILING
MAJOR AMENDMENT
FORT COLLINS COLORADO

BHA DESIGN, INC. • 4803 INNOVATION DRIVE bha FT. COLLINS, CO 80525 • TEL: (970) 223-7577